

STEERING COLUMNS TYPE KK...



The M+S Hydraulic KK Steering Columns transfer the torque from the steering wheel of the vehicle to the HKU, HKUS or other of the same class steering units. The KK steering columns are consisted of a pipe in which is centred the control shaft.

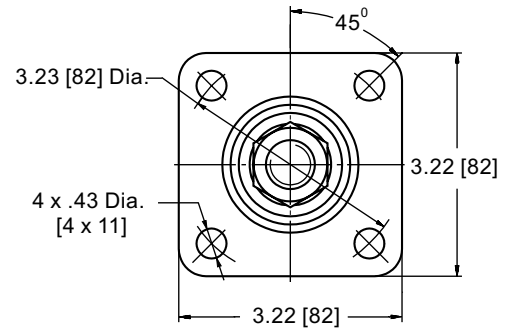
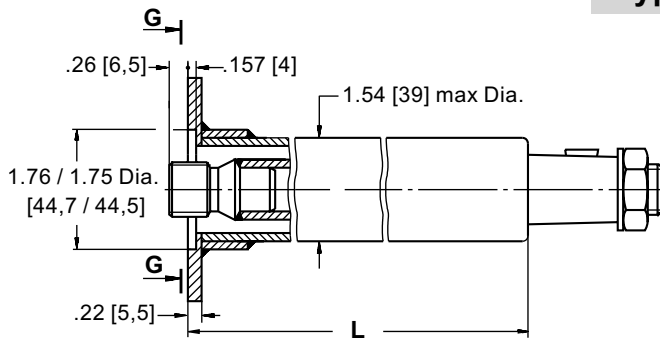
Permissible loads on the steering column are as follows:

Max. torque applied to the steering wheel 2124 in - lb [24 daNm]
 Max. bending moment 1770 in - lb [20 daNm]
 Max. axial load 225 lbs [100 daN]

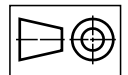
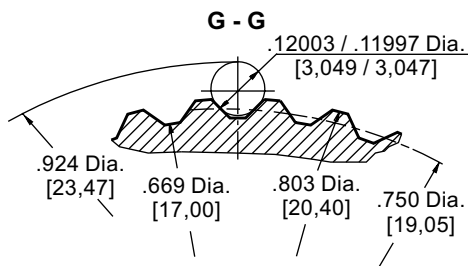
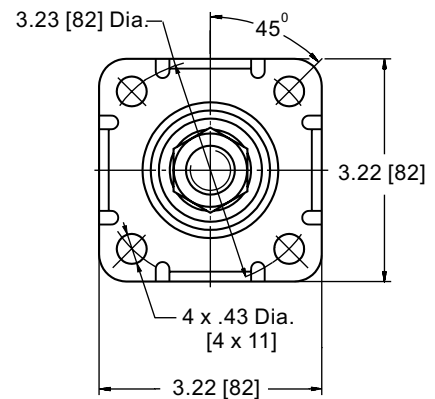
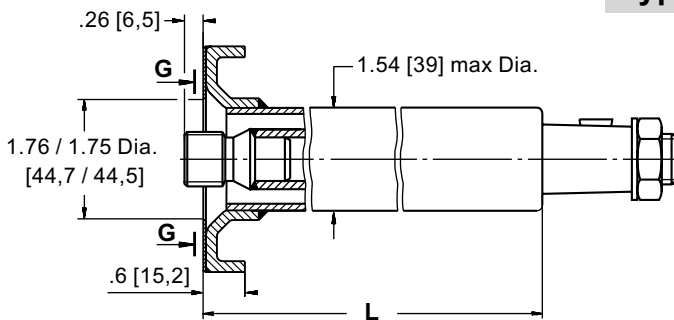
The steering column must be additionally supported when the length L exceeds 5.91 in. [150 mm].

DIMENSIONS AND MOUNTING DATA

Type KK



Type KKF



Involute Spline Data		
Number of Teeth	z	12
Pressure Angle	α	30°
Diametral Pitch	DP	16/32

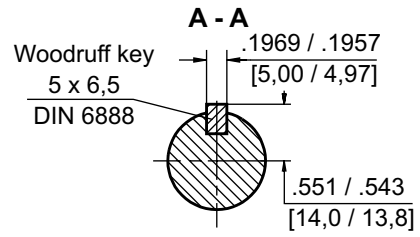
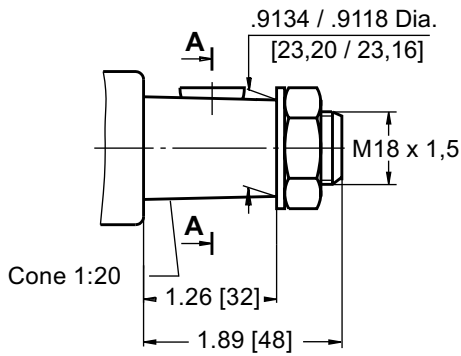
SPECIFICATION DATA

Parameters	Type					
	KK 75	KK 150	KK 390	KK 441	KK 750	
L	in. [mm]	3.07 [78]	6.62 [168,2]	15.47 [393]	17.36 [441]	30.62 [777,8]
Weight	lb [kg]	1.65 [0,75]	2.43 [1,1]	4.19 [1,9]	11.13 [5,05]	7.28 [3,3]

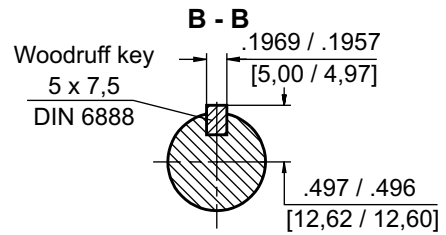
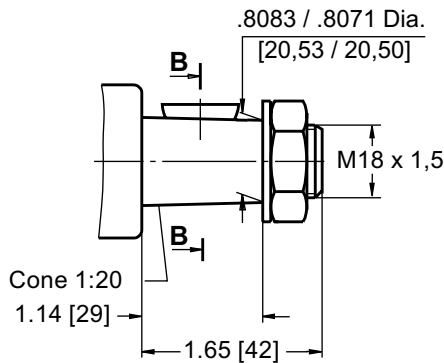
Note: The length L depends on the transport vehicle construction. Please, contact factory or your regional manager regarding other lengths.

SHAFT VERSIONS

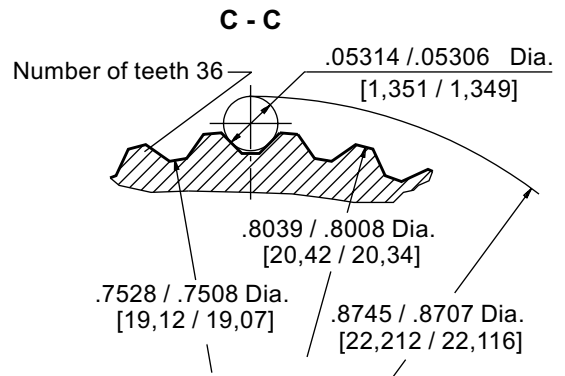
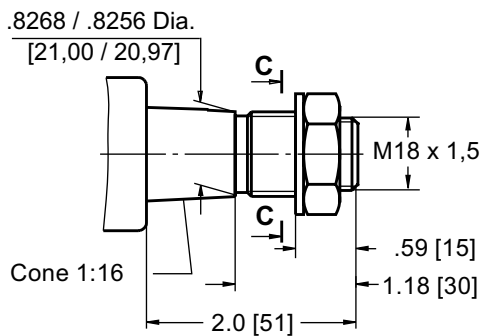
TYPE I



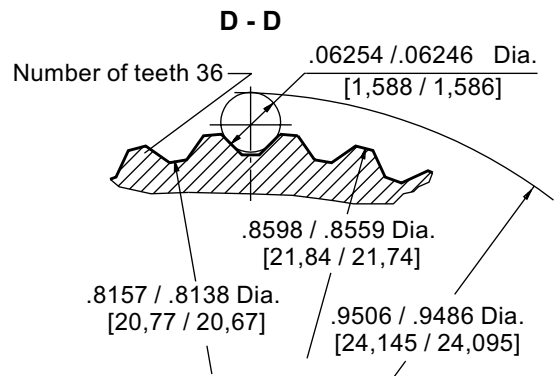
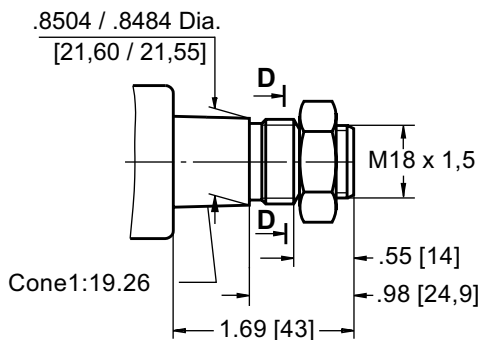
TYPE II



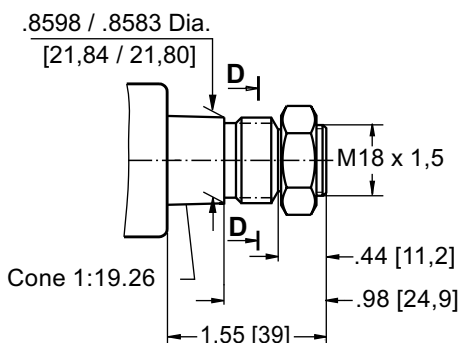
TYPE III



TYPE IV

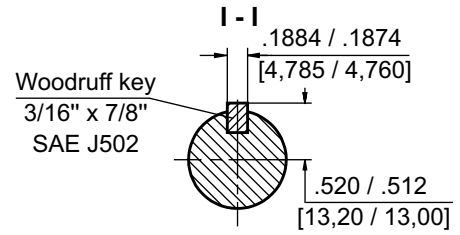
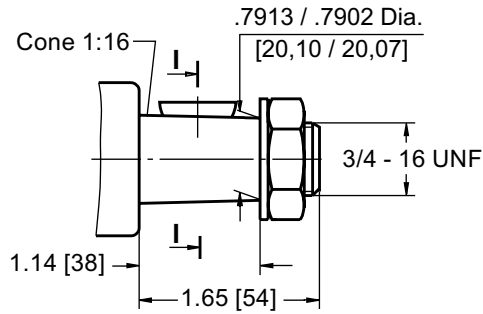


TYPE V

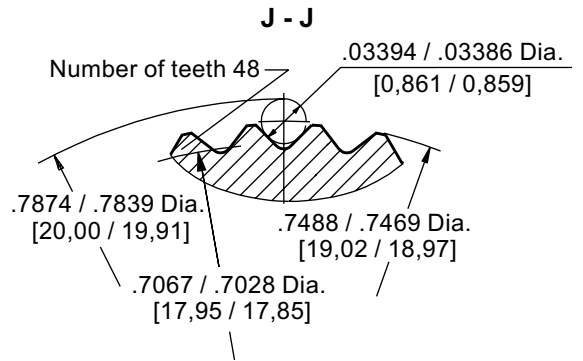
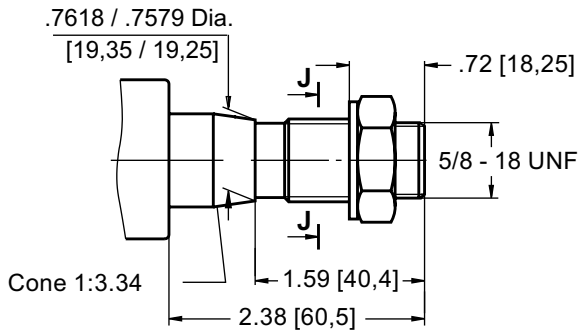


SHAFT VERSIONS

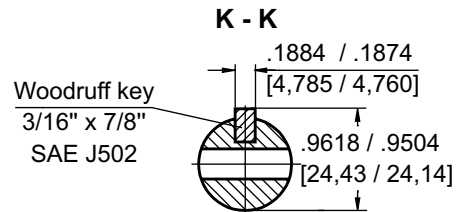
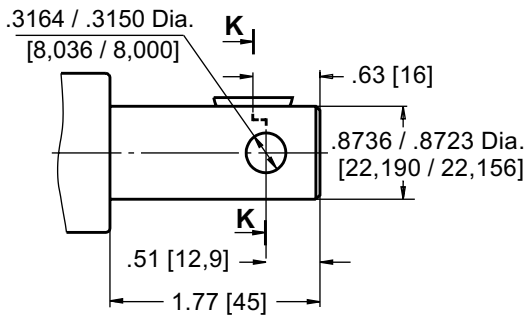
TYPE VI



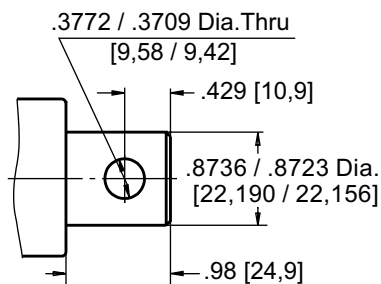
TYPE VII



TYPE VIII

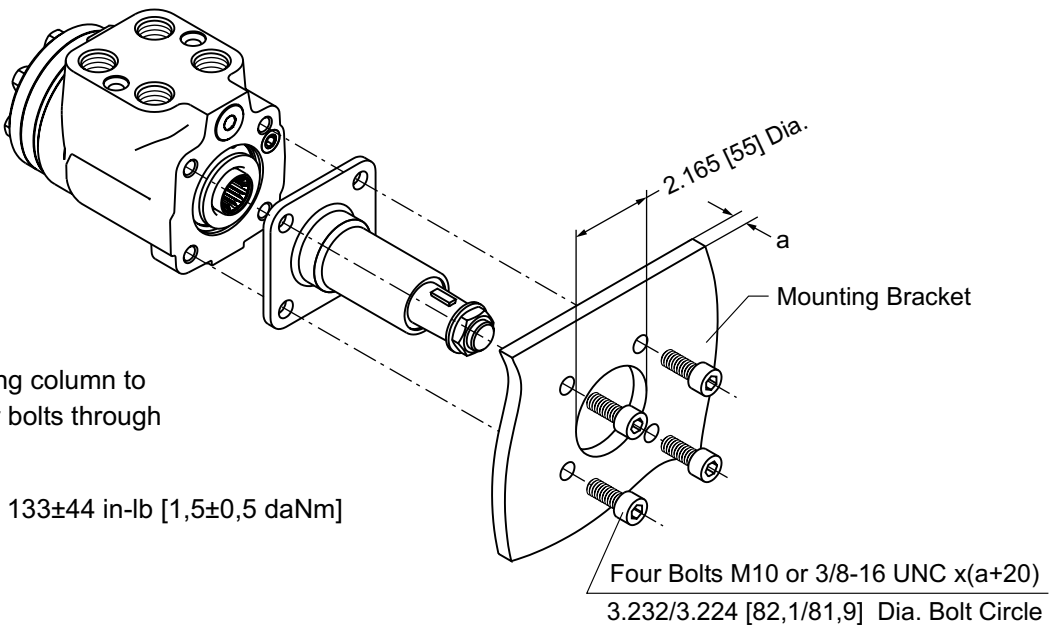


TYPE IX



INSTALLING

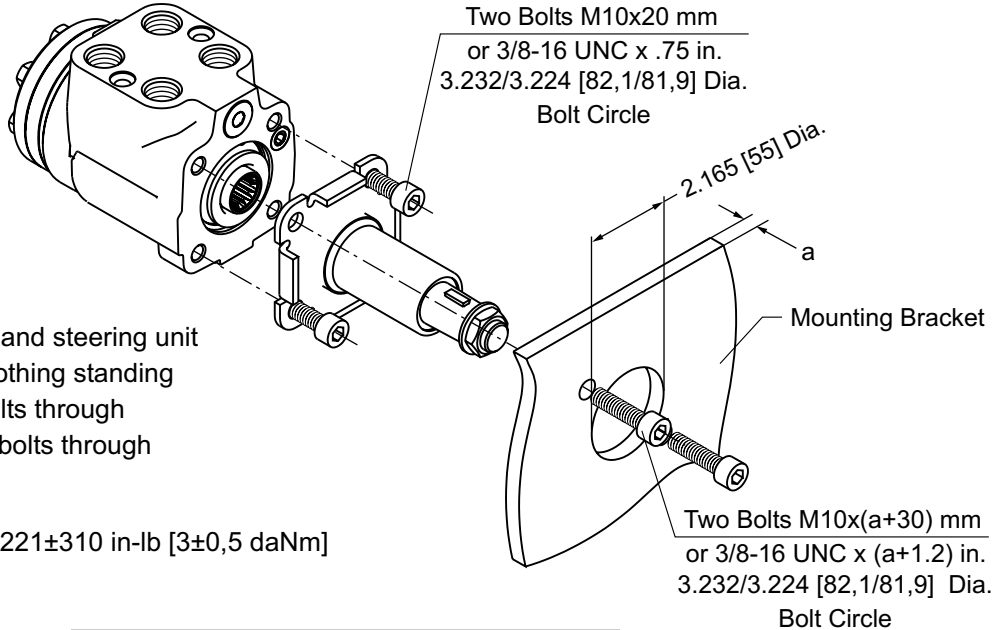
For column type KK



For assembling the Steering column to the Steering units use four bolts through mounting bracket.

Tightening torque for bolts 133±44 in-lb [1,5±0,5 daNm]

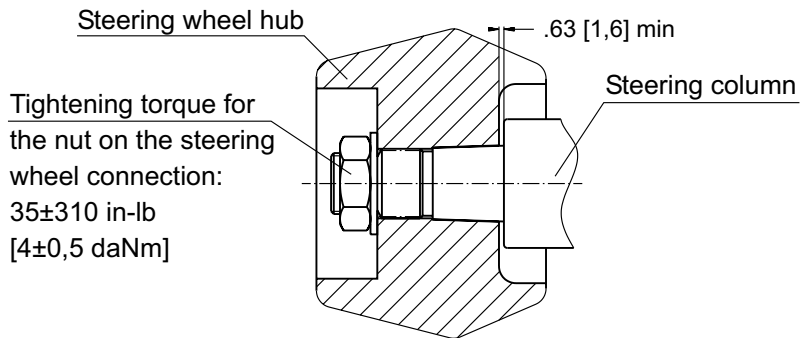
For column type KKF



Steering column type KKF and steering unit must be assembled with nothing standing between them. Use two bolts through mounting bracket and two bolts through just the steering column.

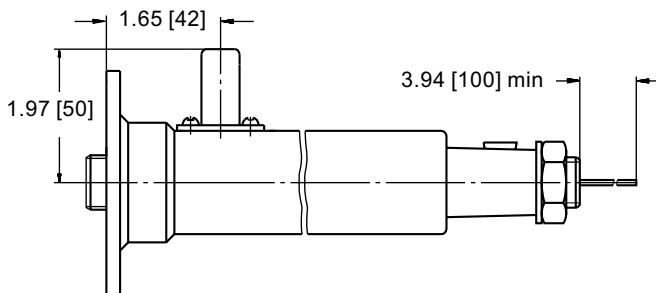
Tightening torque for bolts 221±310 in-lb [3±0,5 daNm]

Minimum Clearance at Assembly

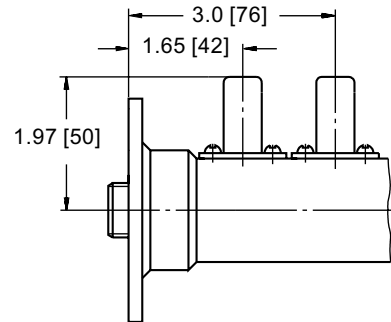


SOUND SIGNAL CONNECTION

E Option



EE Option



ORDER CODE

	1	2	3	4	5	6
KK						

Pos.1 - Mounting Flange

- omit - Flange without Tabs
- F** - Flange with Tabs

Pos.2 - Length, mm (acc. to table)

Pos.3 - Shaft Extensions

- I, II, III, IV, V, VI, VII, VIII, IX

Pos.4 - Signal Connection (Option)

- omit - without electric signal connection
- E** - with one electric signal connection
- EE*** - with two electric signal connection

Pos.5 - Option (Paint)**

- omit - No Paint
- P** - Painted Low Gloss Color
- PC** - Corrosion Protected Paint

Pos.6 - Design Series

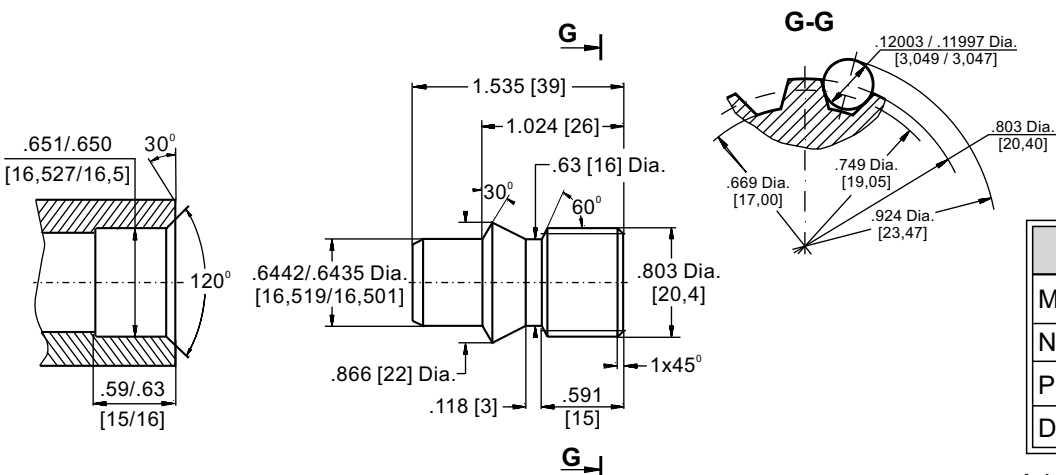
- omit - Factory specified

The steering columns are yellow galvanized as standard.

Notes: * For steering column's length $L > 5.9$ in [150 mm] only.
** Colour at customer's request.

Shaft End Part

Order No:46415 001 00



Involute Spline Data		
Modul	m	1.5875
Number of Teeth	z	12
Pressure Angle	α	30°
Diametral Pitch	DP	16/32